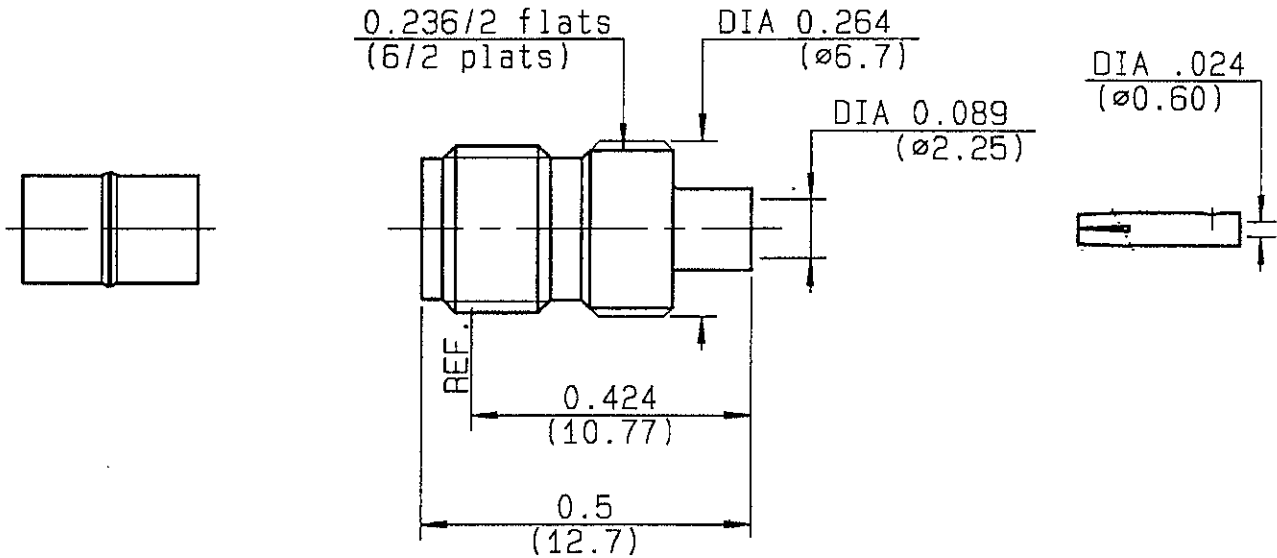


**STRAIGHT JACK SOLDER TYPE
CABLE .085**

R124.222.000
SERIES SMA-COM



| | | | |
|---------------------------------|------------------------------|----------------------------|--------------|
| NOMINAL IMPEDANCE | 50 Ω | CABLES | KS 1 |
| FREQUENCY RANGE | 0-18 GHz | | RG 405 |
| TEMPERATURE RATING | -65/+105 °C | | |
| V.S.W.R | 1.07 + .01 x .F(GHz) Maxi | | |
| RF INSERTION LOSS | .05 \sqrt{F} (GHz) dB Maxi | | |
| VOLTAGE RATING | 335 V_{eff} Maxi | | |
| DIELECTRIC WITHSTANDING VOLTAGE | 750 V_{eff} Mini | | |
| INSULATION RESISTANCE | 5000 $M\Omega$ Mini | OTHERS CHARACTERISTICS | |
| HERMETIC SEAL | NA Atm.cm ³ /s | CABLE RETENTION | 130 N Mini |
| LEAKAGE (pressurized only) | NA | CENTER CONTACT RETENTION | |
| MECHANICAL DURABILITY | 100 Cycles | Axial force - mating end | NA N Mini |
| WEIGHT | gr | Axial force - opposite end | NA N Mini |
| SPECIFICATION | | Torque | NA cm.N Mini |
| | | RECOMMENDED TORQUES | |
| | | Mating | NA cm.N |
| | | Panel nut | NA cm.N |
| | | Clamp nut | NA cm.N |

| CONNECTOR PARTS | MATERIALS | FINISH | (all values are given in micrometers) |
|-----------------|------------------|--------------------------|---------------------------------------|
| BODY | BRASS | BBR 2 | |
| OUTER CONTACT | | | |
| CENTER CONTACT | BERYLLIUM COPPER | GOLD 1.3 OVER COPPER 2.5 | |
| INSULATOR | PTFE | - | |
| GASKET | | - | |
| OTHERS PIECES | | | |

TRIGUES

ISSUE
9828B00

CREATION DATE
30-DEC-96

FILE PART-NUMBER
96-1200-099



RADIALL®

The information given here is subject to change without notice.
Design changes may be in order to improve the product.

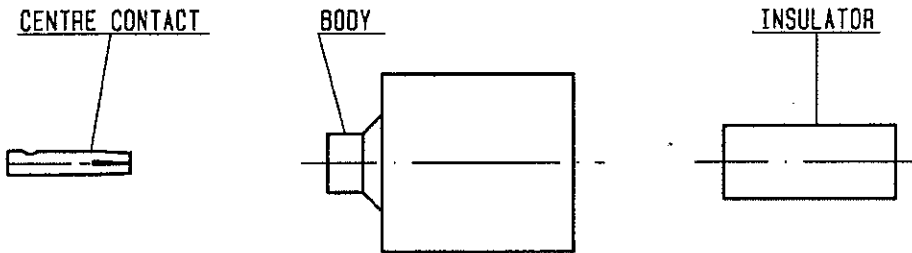
Connect to the future



RADIALL®

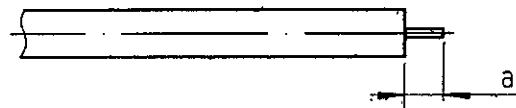
R124.222.000

ISSUE 9828B00 SERIES SMA-COM



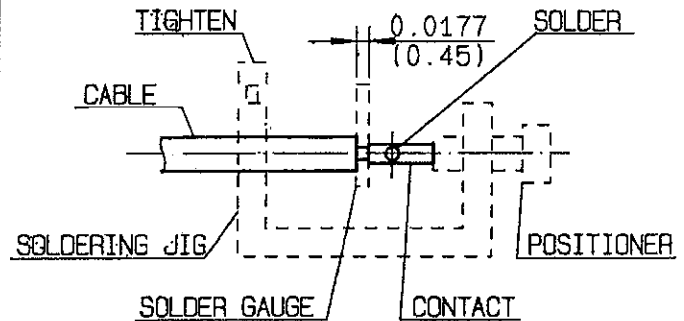
We recommend a cable thermal preconditioning before assembling

- Take the tool kit : R282.120.010
Strip the dielectric of the cable .
Stripping tool cable : R282.051.000
Trimmer : R282.063.000
Clean the cable .

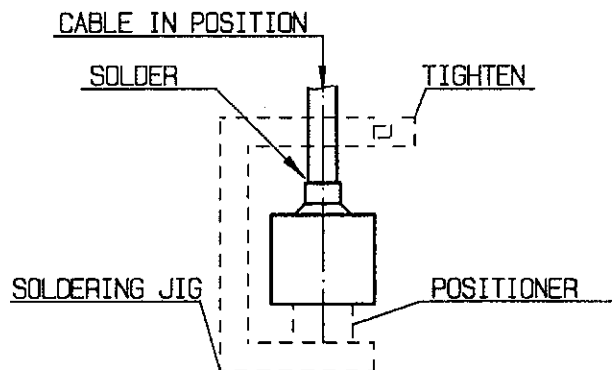


| Stripping | a | b | c | d | e |
|-----------|-------|---|---|---|---|
| inch | 0.125 | 0 | 0 | 0 | 0 |
| mm | 3.17 | | | | |

- Screw the positioner R282.744.220 onto the soldering jig R282.740.000
Slide contact into positioner .
Insert solder gauge R282.862.060 (51) between contact and cable .
Tighten and solder the contact



- After cooling remove cable assembly from the jig .
Screw positioner R282.744.010 into the connector
Slide cable into the connector until it bottoms againsts positioner R282 744.010 .
Tighten
Put 3 rings of solder around the cable and solder



- After cooling remove cable assembly from the jig .
Screw positioner cut R282.914.010
Cut the dielectric flush to clamp braid with tool R282.915.010.
Screw female dielectric insert tool onto connector and insert insulator with the dielectric plunger R282.730.043

